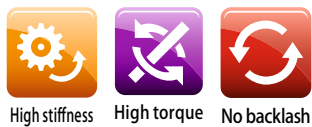


Rigid Couplings STK



Max. rated torque [N·m]	1900
Bore ranges [mm]	φ 6 ~ 50
Operating temperature [°C]	- 40 ~ 175
Drive	Servomotor, induction motor
Applications	Machine tool / semiconductor manufacturing equipment / printing press / packing machine

Rigid Couplings for High Torque and Zero Backlash



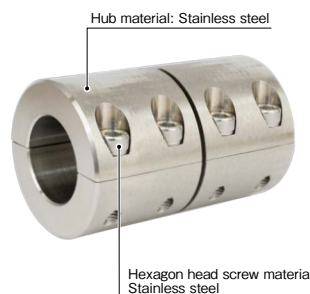
With exactly aligned shafts, an offset compensation is not necessary, here the rigid coupling or shell coupling is the right solution. This type of coupling is characterized by highest torques and particularly high torsional rigidity. Another plus is the ease of installation.

Structure and Materials

■ STK Sliced



■ STK Split



STK Models

COUPLINGS

ELECTROMAGNETIC
CLUTCHES & BRAKES

TORQUE LIMITERS

SERIES

Metal Couplings	Metal Disc Couplings SERVOFLEX
	Metal Coil Spring Couplings BAUMANNFLEX
	Cardan Couplings PARAFLEX
	Sliced Couplings ASK
Rubber and Plastic Couplings	Rigid Couplings STK
	Jaw Couplings MIKI PULLEY STARFLEX
	Jaw Couplings SPRFLEX
	Dual Rubber Couplings STEPFLEX
	Oldham Couplings KSK

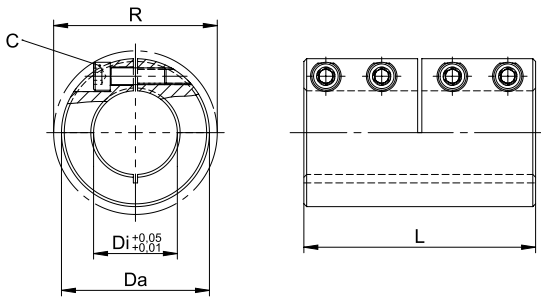
Specifications

Model	Steel [ST] Sliced/Split	Max. torque [N·m]		Tightening torque of screws [N·m]		Mass [kg]
		Sliced [one-piece]	Stainless steel [VA] Split [two-piece]	Steel [ST]	Stainless steel [VA]	
STK-6	30	12	12	2.1	1.2	0.054
STK-8	50	16	18	2.1	1.2	0.110
STK-10	100	25	30	5.1	2.9	0.200
STK-12	105	32	36	5.1	2.9	0.200
STK-14	180	42	67	10.0	5.7	0.300
STK-15	190	50	72	10.0	5.7	0.300
STK-16	200	60	77	10.0	5.7	0.300
STK-17	210	70	79	10.0	5.7	0.300
STK-19	300	90	130	17.5	10.0	0.550
STK-20	350	100	137	17.5	10.0	0.550
STK-25	400	110	171	17.5	10.0	0.670
STK-30	475	150	206	17.5	10.0	0.980
STK-35	1100	330	438	42.0	24.0	1.900
STK-40	1300	400	445	42.0	24.0	2.900
STK-50	2200	690	1000	83.0	48.0	3.600
STK-60	3000	840	1100	83.0	48.0	5.500
STK-70	4000	1500	1600	145.0	82.0	12.800
STK-80	5000	1800	1900	145.0	82.0	17.000

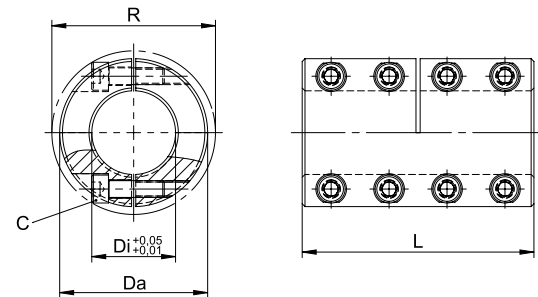
• Max. torque values will only be achieved due proper use (Material and dimensional accuracy of the shaft (recommendation h9), free of grease etc).
• Maximum rpm is depending on material and size.

Dimensions

STK Sliced



STK Split



Unit [mm]

Model	Di	Da	L	R	C	
					Sliced [one-piece]	Split [two-piece]
STK-6	6	18	30	20.0	4-M3	8-M3
STK-8	8	24	35	24.5	4-M3	8-M3
STK-10	10	29	45	32.0	4-M4	8-M4
STK-12	12	29	45	32.0	4-M4	8-M4
STK-14	14	34	50	39.5	4-M5	8-M5
STK-15	15	34	50	39.5	4-M5	8-M5
STK-16	16	34	50	39.5	4-M5	8-M5
STK-17	17	34	50	39.5	4-M5	8-M5
STK-19	19	42	65	47.5	4-M6	8-M6
STK-20	20	42	65	47.5	4-M6	8-M6
STK-25	25	45	75	51.0	4-M6	8-M6
STK-30	30	53	83	58.0	4-M6	8-M6
STK-35	35	67	95	72.0	4-M8	8-M8
STK-40*	40	77	108	77.5	4-M8	8-M8
STK-50*	50	85	124	91.0	4-M10	8-M10
STK-60*	60	100	150	102.0	4-M10	8-M10
STK-70*	70	122	220	—	4-M12	8-M12
STK-80*	80	140	220	—	4-M12	8-M12

*For sliced couplings with these sizes, the slit is on the outside.

MODELS

STK

How to Place an Order

